

Dranetz Industry Leading Portable Products

Wieslaw Jerry Olechiw
Vice President of International Sales
Dranetz and Electrotek Concepts

Dranetz 3 phase Power Monitors

Best - PowerXplorer

High speed transients
Advanced metering



Top of the line

Better - PowerGuide

Answer Modules
Additional recording depth



Great feature set

Good - PowerVisa

Entry level PQ
Meets PQ standards
Demand & Energy
Harmonics



Value oriented PQ
monitor

Power
Quality ↑

Starter – Energy Platform

Demand & Energy Focus
3 phase metering
Harmonics
Limited PQ

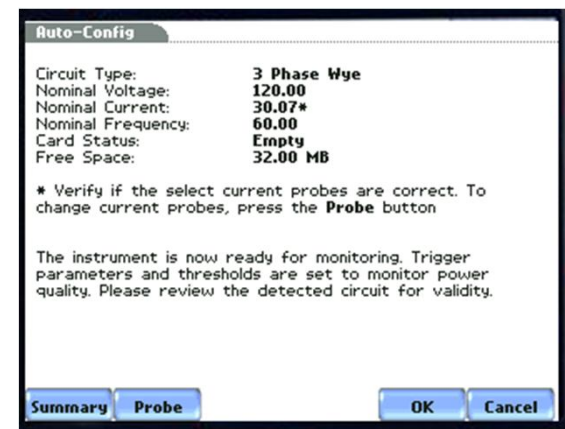
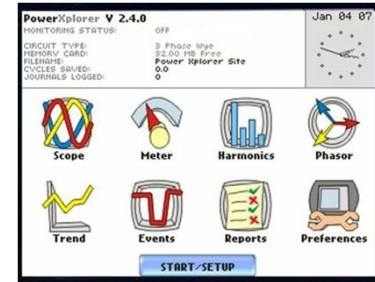


Low cost, best in
class power monitor

Power
Flow ↓

All products have many features in common

- User Interface
 - ¼ VGA Color Touch-Screen
 - Color Graphical Interface - Icon Based
- Easy to use
 - Automatic setups – Automatically detects circuit type!
 - 'Wizard' manual setups guides the user through settings
- Large Memory
 - 4GB (minimum) Compact Flash
 - Largest in the industry
- Includes many languages
- 'Best in class' measurements at every price point
- Compatible with DranView



Common Features

- Data Acquisition

- 8 Channels
 - 4 Voltage, 4 Current (AC & DC)
 - differential
- 256 samples per cycle
- Harmonics to the 63rd
- Low Frequency Transients (up to 5kHz)
- Medium Frequency Transients (5KHz – 500kHz)

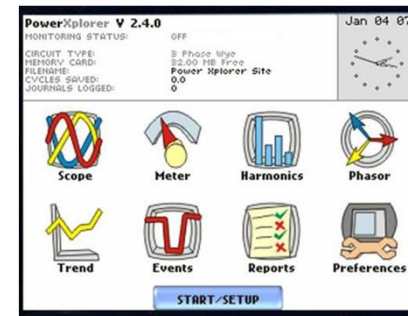
- Accessories

- All 4300 & 658 (w/adaptor) compatible CTs
- Weather resistant enclosures
- Communication Adapters (Ethernet, USB & Serial)
- Software
 - Dranview
 - Nodelink



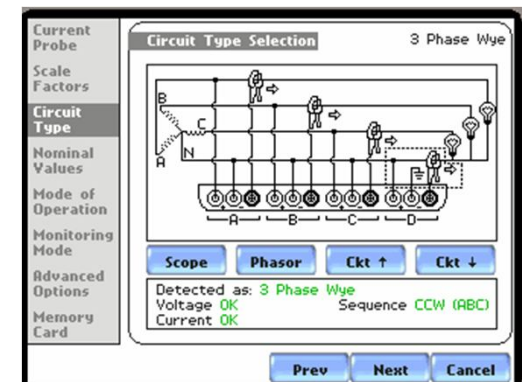
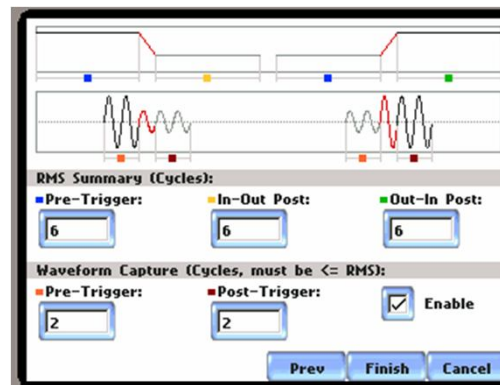
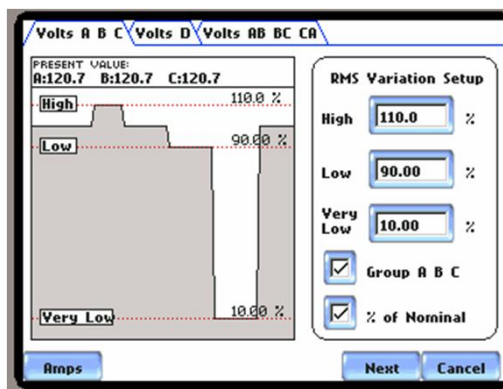
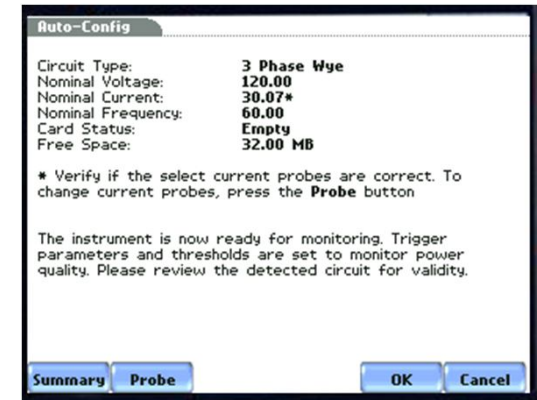
Common Features

- Triggers
 - VRMS & IRMS
 - V Transients & I Transients
 - Peak, rms & (2) waveshape
- Power parameters
 - W, VA, PF, etc.
- Harmonics, Interharmonics
- Flicker
- Many built-in languages



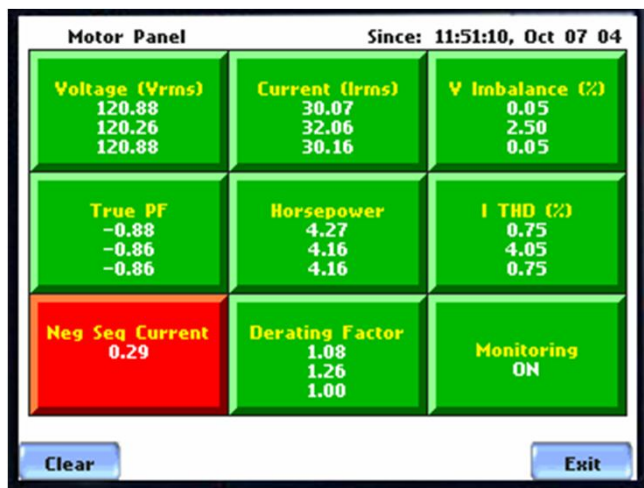
Ease of Use

- Automated and Manual setups!
 - Detects wiring configuration
 - Detects nominal voltages
 - Configures appropriately
 - Provides feedback of wiring mistakes
 - Just press OK to go



Answer Modules

- Available for PG4400, PX5 & PX5-400
 - Sag Directivity
 - PF Capacitor Switching
 - Motor Panel
 - *Not available on the PowerVisa*



10:18:36.599 Mar 04 04 Channel AV			
Trigger	Threshold	Min	Max
RMS High, Low, Very Low	264.0 216.0 24.00	15.15	174.0
Absolute Instantaneous Peak	400.0	18.52	328.1
RMS Distortion Waveshape	16.80	163.0	254.6
Cycle-to-cycle Waveshape	24.0, 10.0%	Triggered	
Integrated High Frequency Trigger	240.0	Not Triggered	
10:18:36.599 - 10:18:36.619, Mar 04 04			
CHANNEL:		AV	
CATEGORY:		Short Duration	
CLASSIFICATION:		Instantaneous Sag	
DURATION:		1.50 Cycles (30.00mSECS)	
DIRECTION:		Upstream	
Chan	+	+	Back

Electric Utilities

Electricité de France	ELES - Elektrogospodarstvo Slovenije Slovenia
Enea –Poland	Elektro Primorska Slovenia
KW Belchatow - Poland	HEP Transmission Company Croatia
Energa – Poland	HEP Distribution Company Croatia
PSE - Poland	Guangdong EPRI - China
Electrabel – Belgium	Shanghai Municipal Electric Power Company
Fecsa Endesa	Shanxi EPRI - China
Gesa Endesa	Companhia de Electricidade, Macau
Unión Fenosa Distribución	JiangSu EPRI, China
EDF Energy	Sunnfjord Energi A/S/ Norway
United Utilities	Shanghai Municipal Electric Power Company
Northern Electric	Shanghai Metro Traffic Co
Western Power Distribution	China EPRI
Companhia de Electricidade, Macau	HEFEI EPRI
JiangSu EPRI, China	
Sunnfjord Energi A/S/ Norway	

Finance/Banking

Banco de Peru
 Banco Popular
 Bloomberg, UK
 Credit Suisse, UK

Commercial/Industrial

Olmex- Poland	AIB Vinçotte
Cuprum –Poland	Port of Antwerp
Hewlett Packard –	European Research Inst.
Netherlands	Power Quality Control –
Kemira GrowHow	Spain
Netherlans	Fundación Labein
Opel Belgium Antwerp	Ayuntamiento Zaragoza
Volvo Ghent	Instituto de Tecnología
Corus – Nthlds	Eléctrica
AluminumSolvay	Revoz/Renault Slovenia
Daikin Europe	Shanghai Metro Traffic Co
Ibm JAPAN	
Belgian Navy	

Consultant/OEM

Gamesa Eólica-
 Spain
 Molinos del –
 Spain
 EbroCiemat-Spain
 Chloride Power
 Protection
 Halcyon Drives
 MGE

Railways

Metro de Madrid, S.A.
 Dimetronic-Spain

Government

A.E.N.A. - Aeropuerto de Barajas
 A.E.N.A. - Aeropuerto de Barcelona
 A.E.N.A. - Aeropuerto de Gerona
 A.E.N.A. - Navegación
 AéreaRetes 22
 Arsenal Militar del Ferrol
 London Air Traffic Control
 MI-5

Commercial/Industrial

Olmex- Poland
 Cuprum –Poland
 Hewlett Packard –
 Netherlands
 Kemira GrowHow
 Netherlands
 Opel Belgium Antwerp
 Volvo Ghent
 Corus – Netherlands
 AluminumSolvay
 Daikin Europe
 Zardoya Otis
 Shanghai ZhengHua
 Harbour Machinery
 Corp.
 Siemen China Factory
 Automation Co.
 Ltd/GDEPRI

AIB Vinçotte
 Port of Antwerp
 European Research
 Inst. Power Quality
 Control – Spain
 Fundación Labein
 Ayuntamiento
 Zaragoza
 Instituto de
 Tecnología Eléctrica
 CEPSA, S.A.
 Peugeot
 EspañaAcerinox
 Pfizer, UK
 Renault, Slovenia
 Sintef
 Statoil
 SKYGUIDE
 Pfizer, UK
 Renault, Slovenia
 Elgar Sorenson

Computer/Information/Telecom

Vodafone España, S.A.
 TVE
 Informatica del Ayuntamiento de
 Madrid SDC Ltd

Consultant/OEM

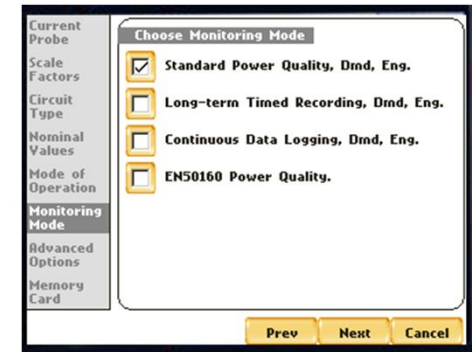
Gamesa Eólica-Spain
 Molinos del –Spain
 EbroCiemat-Spain
 NAVANTIA - Astillero del Ferrol
 STM de Alta Tension
 Construcciones y Montajes
 Industriales
 Sistemas Electrónicos de Potencia
 Mimaven Electrica
 Tempe, S.A
 Fullink UPS
 Socomec

Education

Universidad de Zaragoza
 Universidad de Málaga
 Universidad Politécnica de Cartagena
 Universidad de Oviedo
 CITCEA - Universidad Politécnica de Cataluña
 Universidad de Sevilla
 Universidad de Cordoba
 Universidad de Vigo
 Universidad de Vigo

PowerVisa

- Powerful, yet cost effective PQ, Demand & Energy
 - Easy to Use
 - Color touch screen
 - Auto setup
 - Color report screen
 - 4 Monitoring Modes, 100 cycles per event capacity
 - Advanced energy monitoring
 - Simultaneously monitor PQ & Energy
 - Multiple Languages
 - IEC 61000-4-30 Class A compliance
 - IEEE harmonizing to this standard
 - Large memory
- Advantages – Why compromise?
 - PowerVisa offers the benefits & features customers expect from DBMI at the prices of less capable competitors!
 - DranView is far superior than any competitors SW



PQ Report Since: 09:46:45, Apr 09 08

Voltage (Vrms) 120.3 120.3 120.3	Frequency (Hz) 60.0	Inbalance (%) 0.0 0.0 0.0
Sags 0	Swells 0	Transients 0
Flicker 0.0 0.0 0.0	THD (%) 0.1 0.1 0.1	PQ Monitoring ON

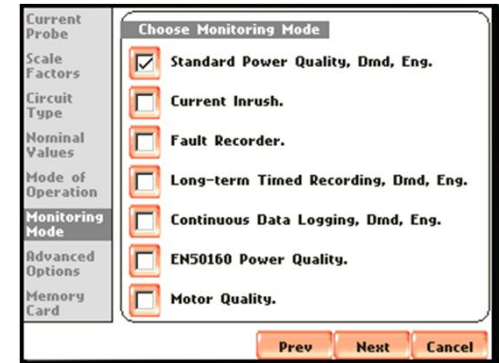
Clear Exit

PQ Report

PQ Report		Since: 09:46:45, Apr 09 08
Voltage (Vrms) 120.3 120.3 120.3	Frequency (Hz) 60.0	Imbalance (%) 0.0 0.0 0.0
Sags 0	Swells 0	Transients 0
Flicker 0.0 0.0 0.0	THD (%) 0.1 0.1 0.1	PQ Monitoring ON
Clear	Exit	

PowerGuide

- Power Visa Benefits & Features Plus
 - 7 Monitoring modes vs. 4
 - 11 Languages vs. 7
 - 10,000 cycles per event capacity vs. 100
 - Answer Modules
 - Sag Directivity
 - PF Capacitor
 - Motor Quality
- Advantages
 - Competitively priced
 - Large memory
 - More advanced capabilities than PowerVisa
 - Answer Modules provide a consultant in a box...



PowerXplorer

- PowerGuide Benefits & Features Plus
 - High speed digitized transients to 1us
 - Advanced metering
 - PX5-400 adds 400Hz capabilities
- Advantages
 - Uncompromising PQ
 - Ease of use
 - Simultaneous energy capabilities



Accessories

Energy Platform, PowerVisa,
PowerGuide, PowerXplorer



Flexible Current Probes

- Flexible CT's, Single Phase, AC Only
 - DRANFLEX3000XL – 30A,300A, 3000A ranges
 - Available in 24, 36 and 48 inch lengths
 - DRANFLEX6000XL – 60A,600A, 6000A ranges
 - Available in 24, 36 and 48 inch lengths
- Flexible CT's, Three Phase, AC Only
 - DRANFLEX3003XL – 30A,300A, 3000A ranges
 - Available in 24, 36 and 48 inch lengths
 - DRANFLEX6003XL – 60A,600A, 6000A ranges
 - Available in 24, 36 and 48 inch lengths



MicroFlex Current Probes

- MicroFlex CT's, Single Phase, AC On
 - **MFLEX6PKG 3/30/300, 6" PROBE**



Flexible Current Probe Power Supplies *New*

- Isolated Flex Probe Power Supplies
 - Isolated to reduce effects of power supply noise on sensitive CT's
 - Used with all Dranetz Flex CT's

- **ISOFLEX-MHXL4P*** Isolated power adapter with cable for up to four probes,



- **ISOFLEX-MHXL*** Isolated power adapter for one probe



Miscellaneous Accessories

- **Communications Adapters (includes NodeLink)**

- COMM-RS232 Fiber to RS232 adapter
- COMM-OEA Fiber to Ethernet adapter with power supply
- COMM-OUA Fiber to USB adapter

- CFDATA-DB CF Data Card

- BP-PX5 Battery Pack

- XBC-PX5US External Battery Charger/UPS

- VCP-4300 Voltage Cable Accessory Pack

- Enclosures & Cases

- ENCL-HH 12 x 14 Fiberglass Enclosure
- LPC-PX5 Lockable Portable Case
- SCC-4300 Soft Carry Case
- RSC-4300 Rugged Ship Container



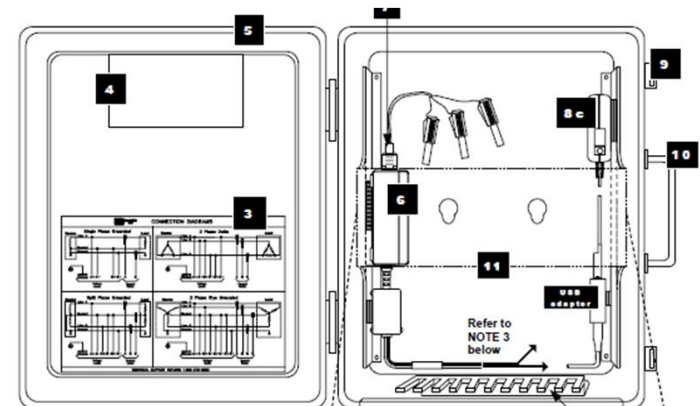
COM-OEA



RSC 4300



LPC 4300



ENCL-HH

Miscellaneous Accessories

- FVA-1 Single Fuse Voltage Adapter
- FVA-4 Set of four Fuse Voltage Adapters
- Reliable Power Meter/Fluke1750 Current Probe Adapters
 - TRTOREDEL Adapter for RPM Clamp-On CT's
 - TRTORFLEX Adapter for RPM Flex CT's
- PPA-PP1R/115 Phase Power Adaptor
- 83003967 Phase Power AC Cord



TRTORFLEX



Phase Power Adapter

DranView 6 Introduction



What is DranView?

- PC Based power analysis software
- Compatible with all current and many legacy Dranetz-BMI products
 - 4400/PX5
 - Power 1000
 - Encore Series
 - 4300, PP1, 658
 - PQDIF files
- Intuitive and easy to use Power Quality and Energy browser
- Visualization, Analysis and Reporting
 - Timelines/trends: Any parameter recorded by the instrument
 - Event details: Waveforms, text summaries, harmonics
 - Multiple level zooming into all data
- Report writer for automatic or custom/editable reports

What is DranView?

- Multi-pane browser
 - Timelines, event details, event lists, etc are displayed in separate panes (windows) within DranView.
 - Each panel relates to the others: Select a point on the timeline or event list and the event details at that point in time are displayed in another pane.
- Rescue Kit
 - Correct and make adjustments to monitoring results.
 - Examples: Adjust times, flip probes, change scaling, etc...
- Special features such as the Harmonics Demo Tool

DranView 6 Introduction

- HASP based license
 - Supplied with the latest secure HASP technology
 - Site license available for 11+ users
- Many standard features including:
 - Automatic Internet program updates
 - Unlimited undo/redo
 - Event sorting and filtering
 - Scrollable/Rollable axis'. Panning & rubber band viewing
 - Report writer always creates RTF files. Built-in RTF editor
 - Report writer detects monitoring mode and defaults appropriately
 - Standard Rescue Kit

DranView 6 Introduction

- DranView 6 is available in two versions. Each version has packages available for different instruments and combinations.
- DranView 6 PRO – Powerful, yet easy to use - Intended users:
 - Entry level users. Simplified feature set
 - Knowledgeable users who do not require the advanced features of Enterprise
 - Single site. Those who view data one site at a time and typically do not use many instruments simultaneously
 - Costs sensitive users
- DranView 6 Enterprise – Advanced feature set - Intended users:
 - Users who prefer an advanced feature set. Many new features not available in PRO
 - Multiple sites. Those who use multiple instruments in parallel or need to easily compare data between sites or instruments.
 - Those that require different file formats such as PQDIF, COMTRADE
 - Those who write reports and do presentations of data
 - Those who can benefit from an expert consulting tool

DRAN-VIEW

Power Quality Browser



Dran-View Professional
Version 6.0.19

This product is licensed to:

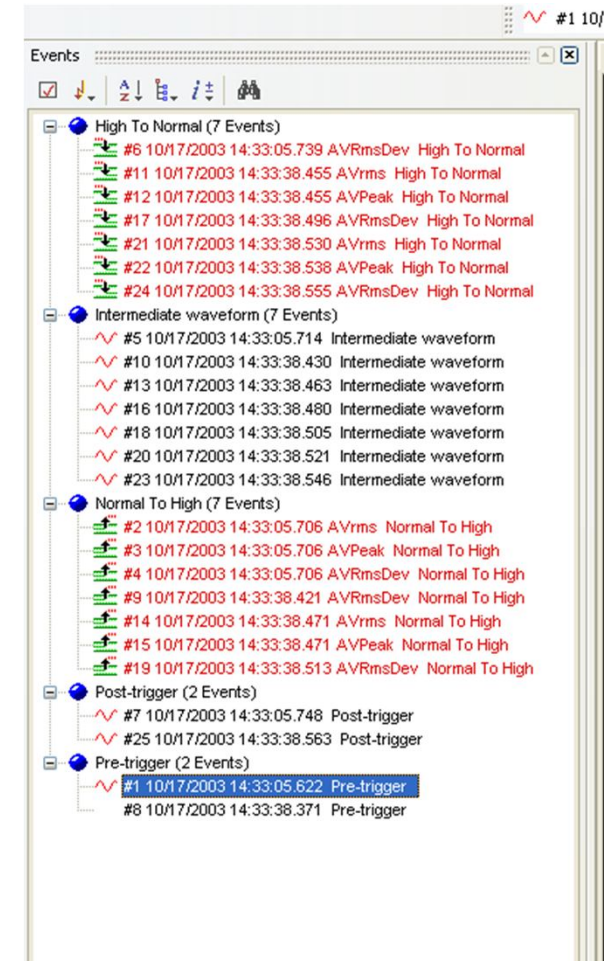


This software is protected by copyright laws and international treaties, see menu About
HASP Hasp-ID: 18694696

*Note: Orange splash screen like the
4400*

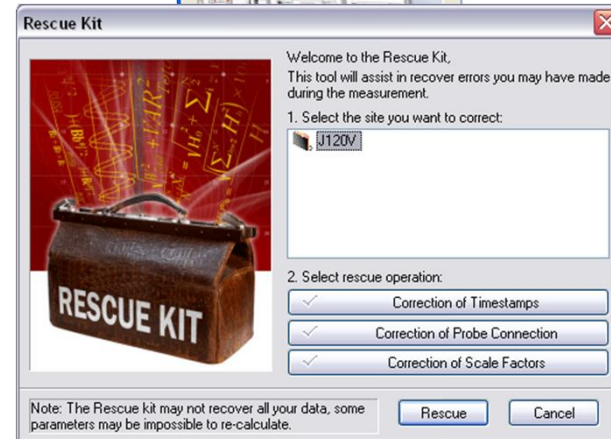
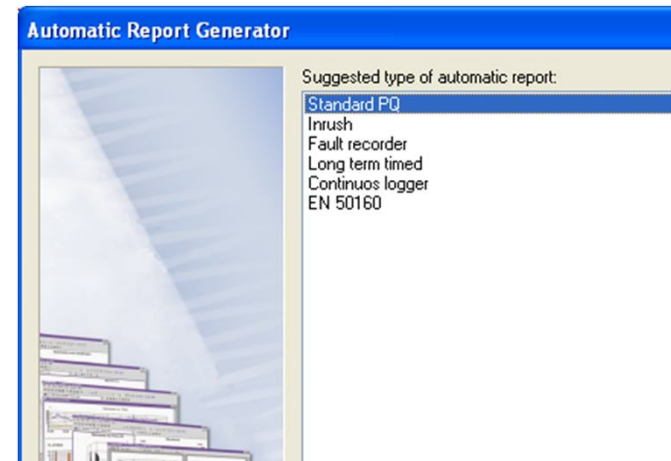
DranView 6 PRO

- General look and feel of DV5
 - Users should be very comfortable with the transition
- Automatic Internet updates
- Data analysis enhancements
 - Scrollable – Pan left/right, up/down
 - Rubber band – stretch and contract data
 - Note: Zoom capabilities remain unchanged
 - Chart area marking tool
 - Format templates
- Event pane
 - Event sorting and filtering



DranView 6 PRO

- Report Writer enhancements
 - Monitoring Mode (4400/PX5) specific reports
 - Integrated RTF text editor
- Rescue Kit
 - Applies to all instrument types
 - Adjust time stamps
 - Reverse current probes
 - Change scaling
 - Change connection type



DranView 6 PRO

- Waveform post processor. For any waveform compute
 - Vrms, Irms, Vpeak, Ipeak, P, Q, S, VThd, IThd, PF, DPF, Frequency, Phase angle difference, Totals, L-L to L-N conversions
 - Harmonics & Phase angles
 - V & I Symmetrical components
 - V& I Unbalance factors
- Personal Notes
 - Add personal notes to the file. Comments, observations, etc...
- Significantly faster with better large file support

DRAN-VIEW

Power Quality Browser



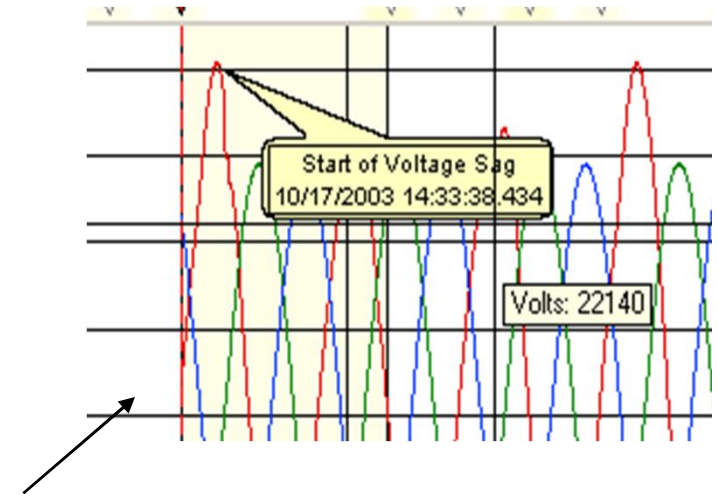
Dran-View Enterprise Version 6.0.19

This product is licensed to:
Ross Ignall Dranetz-BMI

This software is protected by copyright laws and international treaties, see menu About
Exclusive Demo (85 days remaining)

DranView 6 Enterprise

- Includes all DV6 PRO features plus...
- File formats
 - Read COMTRADE
 - Read PQDIF
 - Read ASCII text files (*.txt, *.csv, *.skv)
- Event data removal
- User interface & data analysis
 - Balloon text. Insert floating annotations
 - Drag & drop charts. Add and configure multiple data windows
 - Insert pictures
 - Customize toolbars, keyboard shortcuts



DranView 6 Enterprise

- Camera



- Take a snapshot (bookmark) of a window (pane) for future reference
 - Makes a record of a particular analysis configuration
 - Zoom, channels, colors, etc
 - Just select snapshot to display again
 - Create a filmstrip of snapshots
 - Easily create a Word file with all snapshots
- Report Writer
 - Insert pictures, diagrams, etc
 - Add selected and trends to a report
 - Reports for EN, IEC, G5/4, NVE standards
 - Multi-site report writing



DranView 6 Enterprise

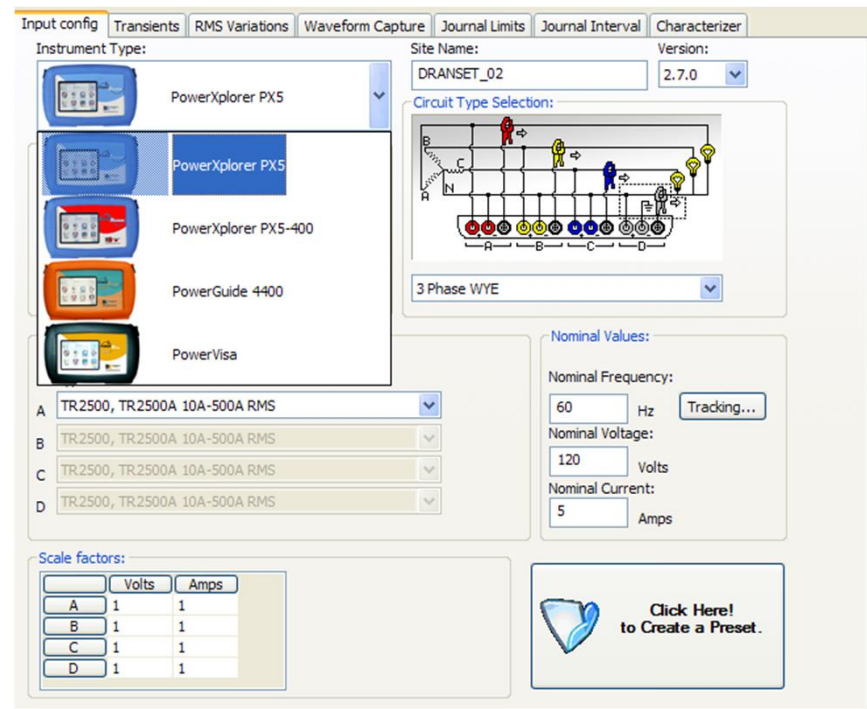
- Multi-Site Compare & correlate data from several sites/instruments
 - Up to 16 simultaneous data sets
 - Multi-site time synchronization
 - Mathematical comparisons between sites. Difference, etc...
- Event data removal
- User interface & data analysis
 - Drag & drop charts. Add and configure multiple data windows
 - Insert pictures
 - Balloon text. Insert floating annotations
 - Customize toolbars, keyboard shortcuts

DranSet *Introduction*



What is DranSet?

- Intuitive and easy to use setup utility software
- Create/edit monitoring setups without instrument
- For use with Dranetz-BMI models
 - PX5-400
 - PX5
 - PG4400
 - PowerVisa



Input config | Transients | RMS Variations | Waveform Capture | Journal Limits | Journal Interval | Characterizer

Instrument Type: PowerXplorer PX5, PowerXplorer PX5, PowerXplorer PX5-400, PowerGuide 4400, PowerVisa

Site Name: DRANSET_02 | Version: 2.7.0

Circuit Type Selection: 3 Phase WYE

Nominal Values:
Nominal Frequency: 60 Hz [Tracking...]
Nominal Voltage: 120 Volts
Nominal Current: 5 Amps

Scale factors:

	Volts	Amps
A	1	1
B	1	1
C	1	1
D	1	1

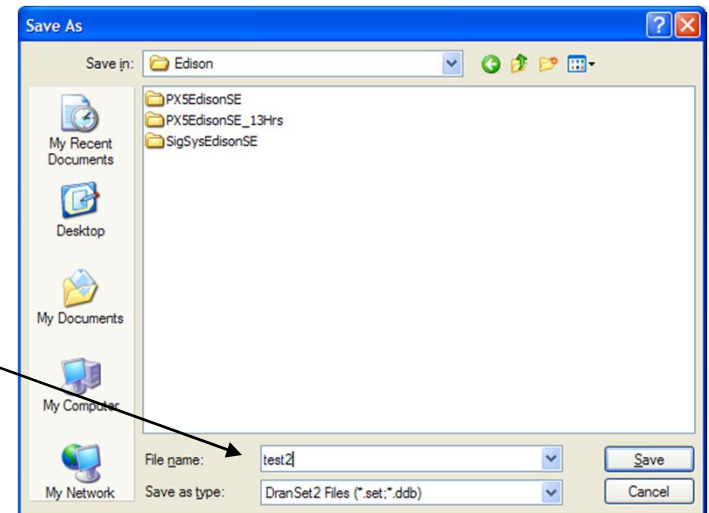
[Click Here! to Create a Preset.](#)

The screenshots display the following windows:

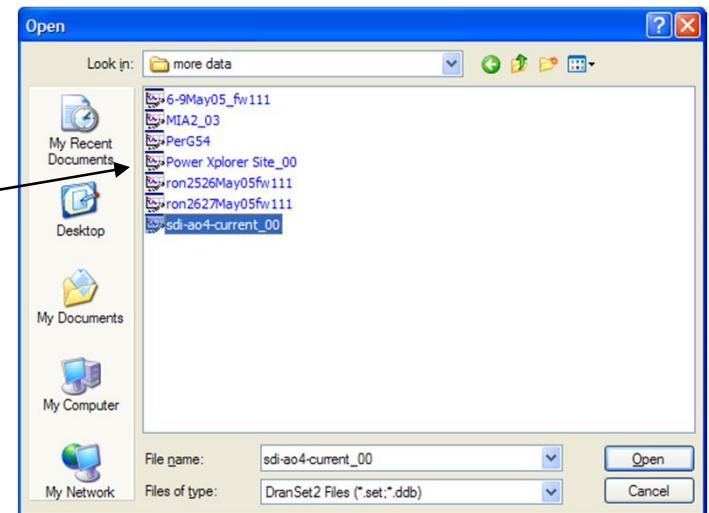
- Input config / Transients / RMS Variations / Waveform Capture / Journal Limits / Journal Interval / Characterizer:** Main configuration window for PowerXplorer PX5, showing monitoring modes, current probe selection, and nominal values.
- RMS Variation Limits:** Window for setting voltage and current limits (High, Low, Very Low) for channels A, B, and C.
- Channel AV:** Window showing a waveform plot and absolute instantaneous peak values for voltage and current.
- RMS Summary:** Window showing a summary of RMS values and waveform capture settings.
- Advanced:** Window for setting advanced triggers and saved waveforms on trigger.

Easy to read & detailed windows

Create new setups



Read existing setups
even from data (ddb) files



3 Phase Power Monitoring

Energy Platform EP1

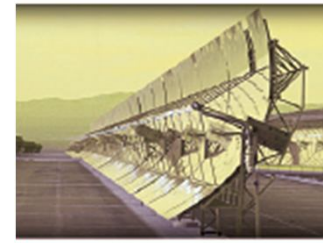


Active Pwr Dmd Tot 30.89K	Predicted W Dmd Tot 30.89K	Dmd Interval Sta... 1 Min into the 1 Min interval
Daily Pk Dmd Date: Jan 01 00 Time: 00:00:00 Dmd: 9584079.0 K	Weekly Pk Dmd Date: Aug 25 09 Time: 15:58:00 Dmd: 30891.5 KW	Monthly Pk Dmd Date: Aug 25 09 Time: 15:58:00 Dmd: 30891.5 KW
RMS Voltage A 120.3 B 120.3 C 120.3	RMS Current A 98.90 B 98.90 C 98.90	Active Power A 10.49K B 10.20K C 10.20K
Clear	Energy	Exit

What is the EP1?

Portable, 3 phase instrument for Energy monitoring applications such as

- Electrical energy reduction & cost savings programs
 - How much energy is used? Where and when used? Daily, Weekly & Monthly KW/KWh
 - Determine energy costs
 - Determine electrical Carbon Footprint
- Alternative energy such as wind and solar
 - Monitor individual generators (panels, windmills) or total generation.
 - DC monitoring for solar applications.
 - Direction of energy flow. Producing or consuming electricity



What is the EP1?

Portable product for Energy monitoring applications such as

- General power studies
 - V, I, W, VA, VAR, PF, Demand, Energy + more
- NEC 220.87 demand surveys
- Load testing, commissioning
- Harmonic studies
- Simple PQ studies

EP1 User Benefits

- Powerful, yet very affordable power monitoring!
 - Better features and easier to use than competition but at a similar price
- Lightweight portable instrument – 3.8lb (1.8Kg)
- Colorful user interface – No PC software required
 - ¼ VGA color touch screen
- Easy to read Energy & Demand reports
- Carbon Footprint Calculator
- EPRW software (no license) included
 - EPRW: **E**nergy **P**latform **R**eport **W**riter software provided at no charge
 - DranView optional
 - New DranView energy audit report for use with EP1 & PX5 family products

Present Energy .. 15:47:08 30.89 KW-s	Daily Energy Rat.. Aug 25 09 609.25 W-Hr	Monthly Energy .. Aug 25 09 609.25 W-Hr
Days Into Billing.. 25 Days into 31 Day cycle	Daily Cost 0.07 USD	Carbon Footprint 319.25 lb CO2
RMS Voltage A 120.3 B 120.3 C 120.3	RMS Current A 98.90 B 98.90 C 98.90	Active Power A 10.49K B 10.20K C 10.20K
Clear	Demand	Exit

EP1 User Benefits

- Large Compact Flash memory for long duration surveys
- Automatic setup
 - No operational training required
 - Easy to use manual setups also available
- High resolution
 - 256 samples per cycle. 8 channels, 4V, 4I. Cycle by cycle accumulation with no gaps in measurements!
- High accuracy
 - 0.1% V&I (plus transducers)
- Packages include all that you need!
 - EP1, voltage cables, CT's, CF Card, Case, EPRW software
- Additional accessories available
 - DranFlex XL CT's, Clamp CT's, Enclosures + more
 - Compatible with the PX5 family

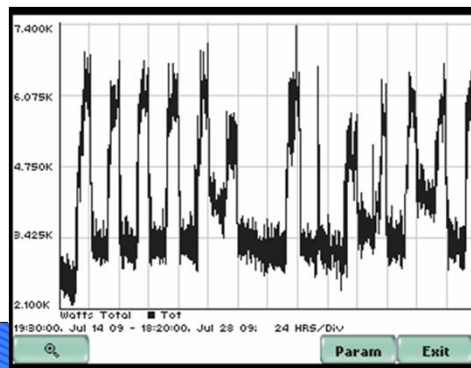


EP1 Feature Set

- Measured, Trended & Triggered Parameters
 - Very similar to PowerVisa
 - Cycle by cycle V & I. 256 samples/cycle
 - CAT III 600V
 - Power – Trend min, max, ave
 - V, I, W, PF, DPF, TPF
 - Distortion – Trend min, max, ave
 - Vthd, Ithd, VTID, ITID, TIF, TDF, K Factor
 - Demand
 - Active, Apparent, Reactive Power Demand
 - Energy
 - KWh, KVAh, KVARh, Forward & Reverse Energy

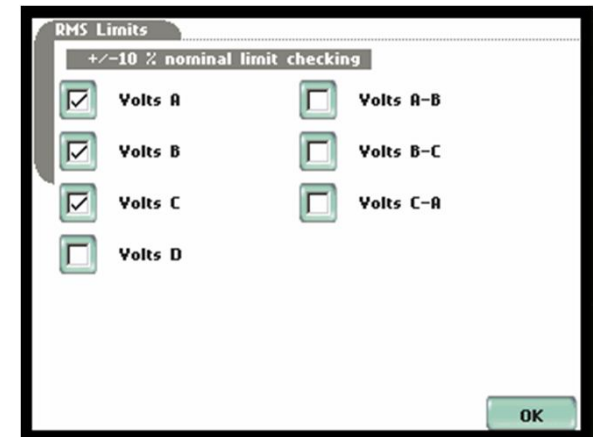
Standard Distortion Advanced		
Basic	Volts	
Comp Basic	A	120.3
Power	B	101.8
Demand	C	101.8
Energy	D	4.985
Harmonics	A-B	209.3 *
Adv Energy	B-C	209.3 *
	C-A	206.3 *
* Derived values		
Exit		

Standard Distortion Advanced				
Peak Power	Fwd	Fwd	Rev	Rev
Pred. Power	W/hr	Var/hr	W/hr	Var/hr
Adv Energy	A	354.1	0	189.2
	B	344.3	0	204.9
	C	344.3	0	206.4
	D	0.817	0	<0.01
	Tot	1.043K	0	600.5
Exit				



EP1 Feature Set

- Measured, Trended & Triggered Parameters
 - Journal trending and triggers work as PowerVisa
 - 200ms resolution on V, I, W, VA, VAR, THD, Harmonics, interharmonics and other parameters
 - Voltage and Current Power Quality is available but limited
 - Sag/Dip & Swell only
 - Cycle by cycle detection
 - No waveforms are available. Text summary of events only
 - Thresholds are fixed to +/- 10% of nominal automatically detected or manually entered.
 - Customer cannot change PQ limits. Can turn PQ triggers on and off
 - Flicker is not available



	<i>PowerVisa/ Power Guia</i>	<i>EP-1</i>
Power Quality Testing (IEC61000-4-30 Class A, IEEE1159)	X	
Energy/Load Surveys & Studies	X	X
Carbon Footprint Calculator		x
Full Differential Channels	x	D Channel
EPRW Software		x
Motor Testing	X	X
Data Logging	X	X
Harmonic Analysis to 63 rd (IEC61000-4-7, IEEE519)	X	X
Flicker per IEC61000-4-15, IEEE1453	X	
Monitoring Modes	4	7
Pre/Fault/Post Cycles	100	
12 Languages	x	X

EP1 Reporting

- Easy to read reports summarize your survey
- Demand Report
 - Present Demand
 - Present demand of the circuit
 - Demand Interval Status
 - Shows time into the demand interval such as 11 minutes into a 15 minute interval
 - Daily, Weekly & Monthly Peak Demand time/date
 - Customers can be billed on peak demand
 - This report shows the date and time of the peak demand for the current day, week and month
 - Real Time V, I, W meter
 - Present metered values
 - Same as meter screen

Active Pwr Dmd Tot 30.89K	Predicted W Dmd Tot 30.89K	Dmd Interval Sta.. 1 Min into the 1 Min interval
Daily Pk Dmd Date: Jan 01 00 Time: 00:00:00 Dmd: 9584079.0 K	Weekly Pk Dmd Date: Aug 25 09 Time: 15:58:00 Dmd: 30891.5 KW	Monthly Pk Dmd Date: Aug 25 09 Time: 15:58:00 Dmd: 30891.5 KW
RMS Voltage A 120.3 B 120.3 C 120.3	RMS Current A 98.90 B 98.90 C 98.90	Active Power A 10.49K B 10.20K C 10.20K
Clear	Energy	Exit

EP1 Reporting

- Energy Report

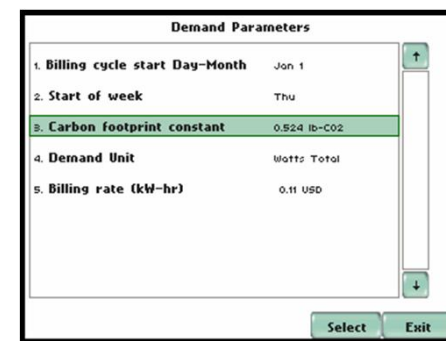
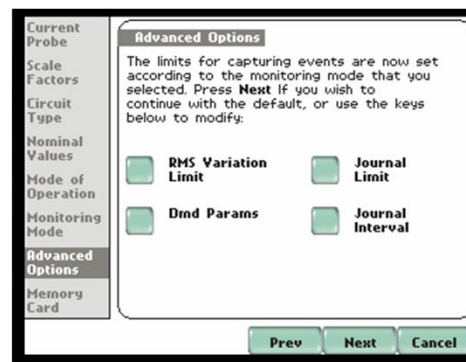
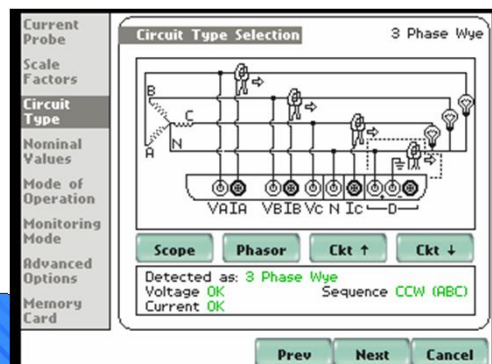
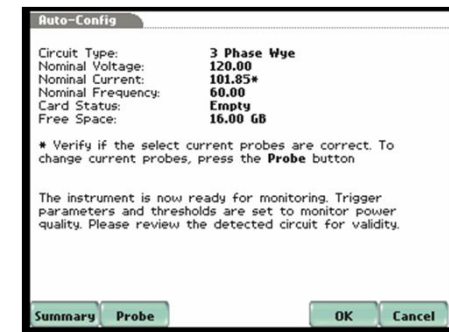
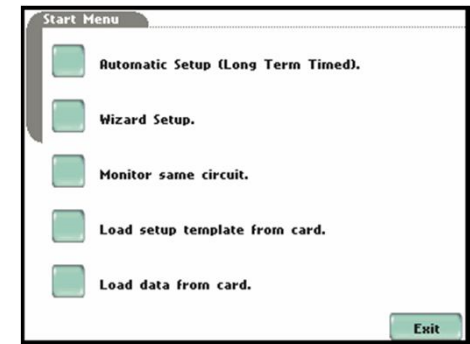
- Billing cycle status
- Daily & Monthly Energy
 - Easily know how much energy is used.
- Carbon Footprint calculator
 - Carbon Footprint represents the Carbon Dioxide CO₂ produced generating electricity consumed.
 - Various generation methods have different carbon footprints, i.e. coal, gas, oil, nuclear, hydro, wind, solar generation have a different impact on the environment. The lower the number, the less CO₂ produced.
 - Usually represented in pounds/KWh or Kg of CO₂ per KWh consumed
 - Can be an average representing all types of generation used by the utility.
 - Example: Pacific Gas & Electric (California, USA) publishes a Carbon Footprint of 0.524 pounds CO₂ /KWh of energy used.
- Real Time V, I, W meter
 - Present metered values, Same as meter screen

Present Energy .. 15:47:08 30.89 KW-s	Daily Energy Rat.. Aug 25 09 609.25 W-Hr	Monthly Energy .. Aug 25 09 609.25 W-Hr
Days Into Billing.. 25 Days into 31 Day cycle	Daily Cost 0.07 USD	Carbon Footprint 319.25 lb CO2
RMS Voltage A 120.3 B 120.3 C 120.3	RMS Current A 98.90 B 98.90 C 98.90	Active Power A 10.49K B 10.20K C 10.20K
Clear	Demand	Exit

Carbon Footprint 319.25 lb CO2
--

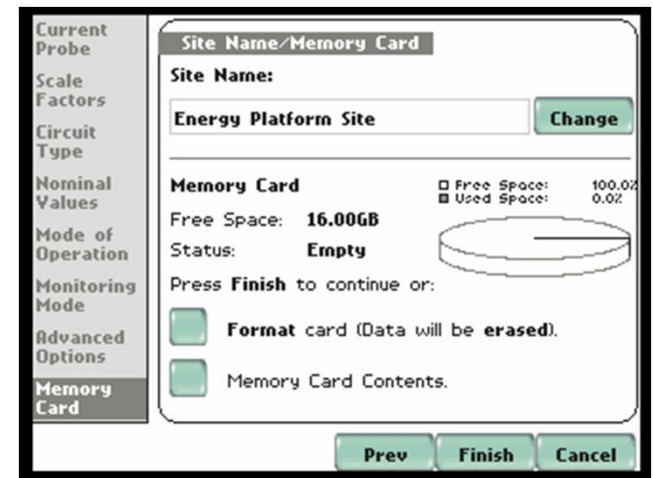
EP1 Setups

- Automatic setups
 - Automatic detection of Circuit Type
 - Factory default settings
 - User can select probe type
- Manual Setups – Wizard
 - Customize recording and reporting parameters
 - Journal triggers – High/Low limits
 - Journal intervals – Demand interval, power& harmonics intervals
 - Demand unit – W, VA, VAR
 - Carbon Footprint – Pound or Kg, multiplier




EP1 Setups

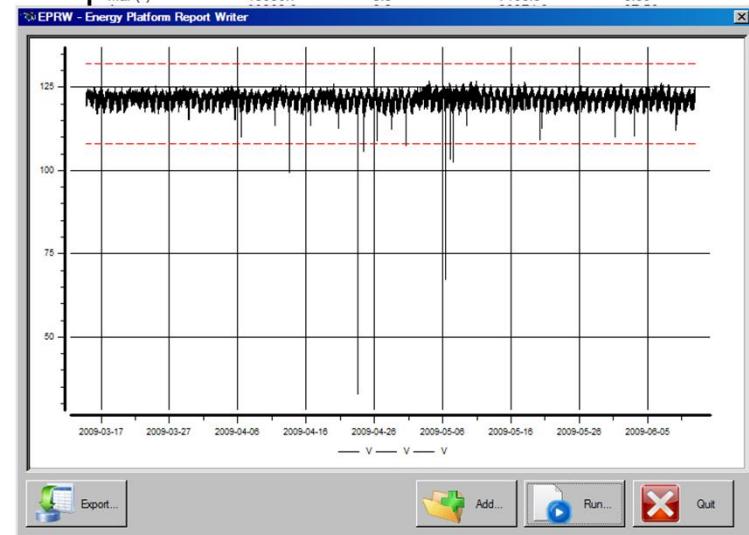
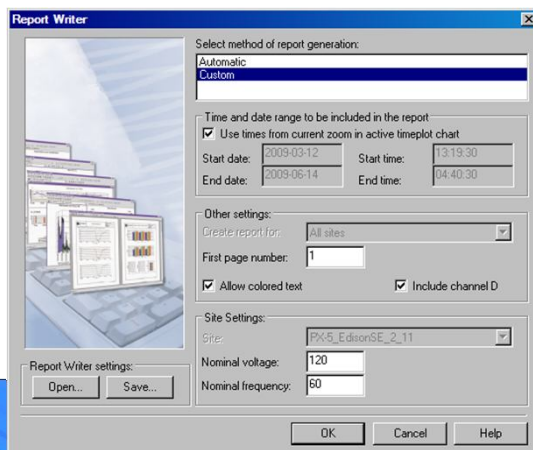
- Compact Flash Data Storage
 - 4GB (min) Compact Flash (CF) provided
 - Data and setups stored on CF card
 - Maximum file size is 256MB. Automatically starts a new file if fills during monitoring
 - CF Card is used to load data into the PC and for EPRW, DranView
 - Standard CF card reader used. USB, built into laptop, etc.
- EP1 has the largest data storage of any manufacturer



EPRW PC Software

- **Energy Platform Report Writer** software
 - Included in package at no additional cost
 - **Unlicensed – No HASP**
 - Automatically produces an energy audit report in an RTF format
 - User selects time range of report
 - Includes Energy expense summary
 - Time Of Use Billing, Trended data
 - Export data to .CSV files for use in other software such as Excel

		PX-5_EdisonSE_2_11	Date: 2009-08-27 Page 1
			Issued by:
			Filename: PX-5_EdisonSE_2_11_05
Demand and Energy Summary Report			
Site: PX-5_EdisonSE_2_11			
Measured from 2009-03-12 13:19:30,0 to 2009-06-14 04:40:30,0			
BILLING DAY OF MONTH: 25			
DEMAND and ENERGY REPORT			
DEMAND			
	ON-PEAK (kW)	PARTIAL-PEAK (kW)	OFF-PEAK (kW)
Mar (*)	160.5	0.0	135.7
Apr	166.1	0.0	144.7
May	221.2	0.0	163.6
Jun (*)	196.9	0.0	169.2
Max values	221.2	0.0	169.2
ENERGY CONSUMPTION			
	ON-PEAK (kWh)	PARTIAL-PEAK (kWh)	OFF-PEAK (kWh)
Mar (*)	10606.7	0.0	7168.5
			CARBON FOOTPRINT (tons)
			8.89



DranView PC Software

- Optionally available for use with EP1
- New driver to read EP1 data
- New Energy Audit report added to the DV report writer
 - Energy Audit report is similar to EPRW reporting features
 - Demand & Time Of Use reports

Time of Use Billing

Site: Willows Concession final
Measured from 07/14/2009 11:12:09.0 to 07/29/2009 02:37:01.0
BILLING DAY OF MONTH: 1

TIME OF USE COSTS

	DEMAND		
	ON-PEAK (\$)	PARTIAL-PEAK (\$)	OFF-PEAK (\$)
Jul (*)	0.0	0.0	0.0

	ENERGY CONSUMPTION		
	ON-PEAK (\$)	PARTIAL-PEAK (\$)	OFF-PEAK (\$)
Jul (*)	36.6	50.4	39.7
Total values	36.6	50.4	39.7

(*) Indicates partial month.

Energy Audit

☐ Same settings for all days of the week

Day	On-peak starts	On-peak ends	Partial-peak starts	Partial-peak ends
Monday	16:30	21:00	09:00	16:30
Tuesday	16:30	21:00	09:00	16:30
Wednesday	16:30	21:00	09:00	16:30
Thursday	16:30	21:00	09:00	16:30
Friday	16:30	21:00	09:00	16:30
Saturday	16:30	21:00	09:00	16:30
Sunday	16:30	21:00	09:00	16:30

Note: Any time span outside the given ranges are considered Off-peak.

Unit:

☒ kW
☐ kVAR
☐ kVA

	On-peak	Partial-peak	Off-peak
Demand, cost/kW	0.00	0.00	0.00
Energy, cost/kWh	0.12	0.10	0.07

Billing day of month: Tax rate (%):

Currency: Carbon footprint: pounds/kWh

Energy Audit settings:

< Back Finish Cancel Help



DRANETZ™

ARD FOR ENERGY & POWER MEASUREMENT

The Right Tool for the Job



 **GOSSEN METRAWAT™**

Dranetz-BMI
1000 New Durham Rd
Edison, NJ 08818-4019
732-287-3680
www.dranetz-bmi.com